

鹏翼智能产品手册

PENGYI INTELLIGENT PRODUCT BROCHURE



公众号二维码



官网二维码

秦皇岛鹏翼智能科技有限公司（总部）

地址：秦皇岛经济技术开发区都山路 12 号

电话：+86-335-8592366+86-335-8592388

传真：+86-335-8570389

手机号：+86-13603233656+86-15533523777

Address: No.12 Dushan Road, ETDZ, Qinhuangdao City, Hebei Province Development Zone

Tel:+86-335-8592366+86-335-8592388

Fax:+86-335-8570389

Mobile phone number:+86-13603233656+86-15533523777

Pengyi Intelligent

www.qhdpengyi.com

CONTENTS

目录

鹏翼智能 PENGYI INTELLIGENT 公司简介 / 行业范畴	04-07
鹏翼智能装备一览 PENGYI intelligent Machine List 湿法研磨设备 / 搅拌混合设备 / 分散搅拌设备 / 相关配套设备	08-43
客户服务 Customer Service 售前 / 售中 / 售后	44-45
合作共赢 Win-win Cooperation 相关案例 / 合作客户	46-51

公司介绍

COMPANY



1995年
公司成立

100+
涵盖国家

1000+
服务客户

800/台套
年产能力

鹏翼智能科技有限公司，以智能机器+智能系统为基础，专注于湿法研磨、分散、搅拌、混合成套设备的研发、生产和销售，经过多年的经营发展与积累，公司已成为业内知名的研磨设备生产制造商之一。

公司位于河北省秦皇岛市，是国家认可的“潜港”城市，拥有便利的交通运输条件。公司内设物料试验生产实验室，这里有一站式的工艺研磨验证设备，从实验型配方验证到中试等比放大验证，为客户提供购前试验、测试设备等服务，以清晰准确的数据，帮助客户完成设备采购尽调工作。

公司设有国际贸易事业部，成功在俄罗斯、埃及、新加坡等多地签约战略合作伙伴，产品成功出口到美国、俄罗斯、印度、澳大利亚、埃及、斯里兰卡、乌克兰、泰国、巴西、马来西亚越南等多个国家，获得了国内外客户的广泛认可。

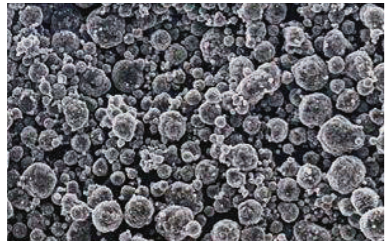
公司坚持：“质量有保障，服务可信赖，用户满意”为原则，用技术研发实力做支撑，坚定追求行业技术创新，快速响应市场客户需求，开拓多元化市场，竭诚为客户提供贴心服务。鹏翼智能期待成为您的合作伙伴！

Pengyi Intelligent Technology co.,LTD., concentrates on the equipment of wet grinding, dispersing, mixing and production line with the high level of intelligent system. Pengyi offers the services ODM and OEM, with the professional departments which includes R&D, manufacture and marketing. Currently, Pengyi is one of the top manufactures in the Chinese industry of grinding, mixing with the years development and accumulation.

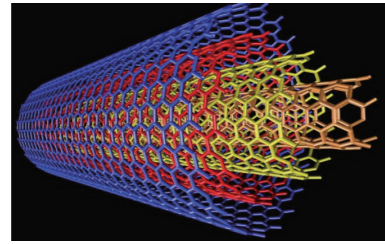
Pengyi is located in the latent port city Qinhuangdao with convenient transportation, which is recognized by China government. Pengyi established its own laboratory for material testing with the grinding validation equipment, from experimental formula validation to middle scale validation and offering the pre-purchase testing services to customers with clear and accurate working data.

The company has International Trade Division and has successfully signed many strategic partners in Russia, Egypt, Singapore, etc. ; products successfully exported to the United States, Russia, Korea, India, Australia, Egypt, Sri Lanka, Ukraine, Thailand, Brazil, Malaysia, Vietnam and other countries, has been widely recognized by customers at home and abroad.

Adhering to the principle of "quality guaranteed, reliable service, customer satisfaction", the company firmly pursues technological innovation in the industry with the support of technical research and development strength, quickly responds to the needs of customers in the market, explores diversified markets, and wholeheartedly provides intimate service for customers. Pengyi is looking forward to becoming your partner!



磷酸铁锂



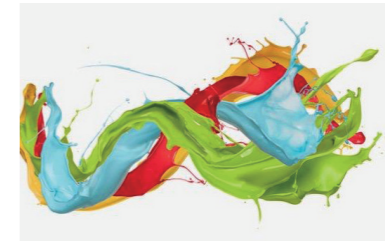
碳纳米管



农药



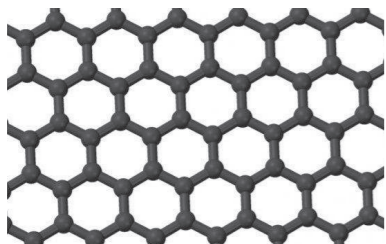
汽车漆



水性色浆



网版油漆



石墨烯



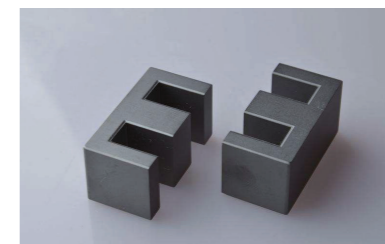
陶瓷喷墨



医药



家具漆



磁性材料



电池负极



纳米硅



电子陶瓷



喷墨墨水



工业漆



食品添加剂



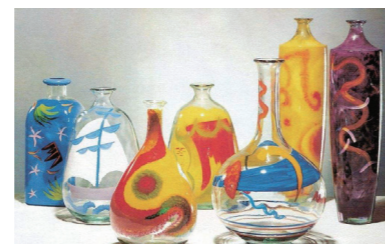
催化剂



氧化铝隔膜



氧化铝



玻璃油墨



油墨



硅酸锆



碳酸钡

胶板油墨、电容陶瓷、硅酸锆、硫酸钡、凸板油墨、电池正极、磁性材料、钛酸钡、丝印油墨、氢氧化铝、电子浆料、建材漆

行业范畴

INDUSTRY CATEGORY

www.qhdpengyi.com

鹏翼智能装备一览

PENGYI INTELLIGENT MACHINE LIST

湿法研磨设备

实验室砂磨机	双动力离心砂磨机
盘式大流量砂磨机	磷酸铁锂专用纳米砂磨机
棒销式高效纳米砂磨机	超细珠磨机
涡轮砂磨机	篮式珠磨机

实验室砂磨机 Laboratory Beads Mill

应用场景 Application Scenario

高校、研究院、企业研发初期。可用于产品研发、可行性验证、过程优化、设备选型。

Universities, Research institutes and the initial stage of R&D of enterprises. It can be used for R&D of product, feasibility verification, process optimization and equipment selection.



产品特点 Product characteristics

该系列的砂磨机均采用精密可靠的双端面机械密封的密封形式，具有高度稳定性和耐用性；研磨腔体采用全密闭设计避免了物料污、也避免了物料的暴露和空气的接触所产生的气泡、杜绝了溶剂的挥发造成的空气污染。

This series of bead mill adopts precise and reliable double mechanical seal, which is high stability and durability. The design of grinding chamber is full closed, protect the material from pollution and air contact, avoid air pollution which caused by the solvent volatilization.

产品规格 Product specification

* 取决于所研磨物料粘度、研磨工况、泵浦的输送形式等因素

型号 Model	研磨腔体有效容积 [L] Effective Volume [L]	主驱动功率 [KW] Motor Power [KW]	加工批量 [L] Batch Capacity [L]	流量 [kg/h] Flow Rate [kg/h]	尺寸 [mm] Dimension [mm]	重量 [KG] Weight [kg]
WSM-1	1	4	3-30	20-60	950*650*800	150
WSM-5	5	5.5	20-100	20-200	1100*800*1500	400
WSM-10	10	11	50-260	60-800	1250*900*1600	750
BSM-0.5	0.5	4	2-20	15-100	900*700*1000	160
BSM-1	1	4	2-30	15-100	900*700*1000	165
BSM-2	2	7.5	10-100	200-500	1150*1110*1250	350
BSM-10	10	18.5-22	20-150	200-800	1200*1100*1600	960

BSM 代表棒销结构, WSM 代表盘式结构 BSM stands for rod pin structure, WSM stands for disc structure

湿法研磨设备

WET GRINDING EQUIPMENT

盘式大流量砂磨机 Large Flow Efficient Beads Mill

应用场景 Application Scenario

本系列砂磨机采用先进的研磨技术对产品进行超精细研磨，具有研磨效率高、产量大、能耗低等特点，广泛应用于涂料、油漆、油墨、染料、农药等化工行业。

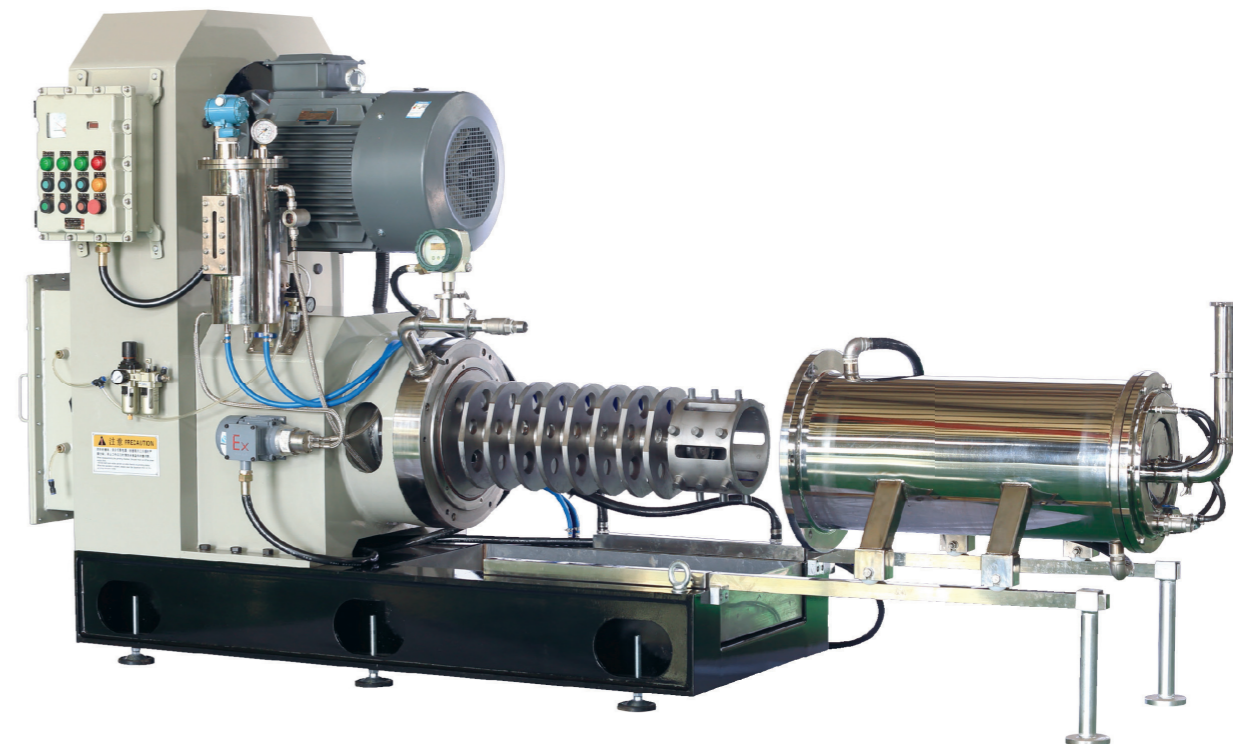
This mill adopts advanced grinding technology to grind products to super fineness ,high grinding efficiency.large production capacity,low energy consumption etc. widely used in the industry of coatings, paint, ink,dyestuff and pesticide etc.

产品特点 Product characteristics

- 紧凑、稳定的焊接结构机架，实用而美观；
- 精心设计的盘棒结合分散结构，使研磨介质与物料在分散器之间进行强烈的能量交换，从而达到对物料的超精细研磨；
- 先进的大流量分离筛结构，保证高效生产，不发生堵塞集成式双端面机械密封，可根据物料特性选择润滑剂；
- 高耐磨研磨内筒及分散器可方便更换，材质有合金钢、陶瓷、高分子、不锈钢等多种选择；
- 螺旋式水循环通道、多部位冷却水设置，散热性能极佳全防爆按钮操控和科学化的 PLC 触屏操控可选择；
- 进料压力、出料温度、机封润滑油箱液位等多部位安全控制。

Compact and stable welding structure rack,Useful and nice appearance.Well-designed discs and pin combine dispersing system,strong energy exchange between grinding beads and material,thereby reaching super fineness grinding.Advanced large flow separating screen,ensure high efficient production,no block up Integrated Double mechanical seal,allowed choosing lubricant according to product character.Easy replaced High wear-resistant inner grinding chamber and dispersing parts,Alloy steel,ceramic,high polymer material,stainless steel etc for choice.Screw type force water cycle passageway,multiple positions cooling water setting.

excellent cooling performance.Full Ex buttons control and Scientific PCL touch screen control for choice.Feeding Pressure,Output Temperature,Mechanical seal lubricant oil level etc multiple Safety control.



产品规格 Product specification

* 取决于所研磨物料粘度、研磨工况、泵的输送形式等因素

型号 Model	研磨腔体有效容积 [L] Effective Volume[L]	主驱动功率 [KW] Motor Power[KW]	加工批量 [L] Batch Capacity[L]	流量 [kg/h] Flow Rate[kg/h]	尺寸 [mm] Dimension[mm]	重量 [kg] Weight[kg]
WSM-30	30	22-30	150-600	120-1500	1700*1050*1850	1200
WSM-60	60	37-45	200-1500	300-2000	2050*1100*1800	1700
WSM-100	100	55-75	500-2500	600-3500	2200*1150*1900	2500
WSM-200	200	75-90	800-3500	800-5000	2700*1200*2100	3500
WSM-300	300	90-110	1000-4500	800-5000	3000*1300*2300	4500
WSM-500	500	132-160	1000-5000	1000-5500	3800*1350*2500	6500
WSM-1000	1000	315-355	2000-10000	4000-12000	5500*1800*2600	11000
WSM-2000	2000	450-500	3000-15000	4000-18000	7800*2000*2000	19500
WSM-3000	3000	560-800	5000-20000	4000-18000	9500*2200*2000	43500

棒销式高效纳米砂磨机 Pin type Horizontal bead mill

应用场景 Application Scenario

本系列砂磨机采用先进的研磨技术对高粘度产品进行超精细研磨，具有研磨效率高、产量大、能耗低等特点，广泛应用于涂料、油漆、油墨等化工行业。

This series of bead mill adopts advanced grinding technology, super fine grinding, The characteristics of this mill s high grinding efficiency, large output low energy consumption, widely used in the industry of coatings, paint, ink, dyestuff and pesticide etc.

化工行业产品规格 Chemical industry product specifications

* 取决于所研磨物料粘度、研磨工况、泵浦的输送形式等因素

型号 Model	BS-5	BS-10	BS-20	BS-30	BS-60	BS-100
筒体有效容积 [L] Tank effective volume	4.8	9.2	20	29	58	98
主电机功率 [KW] Main Motor Power	5.5	11	30	37	45-55	75
主轴转速 [r/min] Main shaft Speed	1440	1273	1120	838	694	533
物料粘度 [Pa.s] Product Viscosity	≤ 30	≤ 30	≤ 30	≤ 30	≤ 30	≤ 30
研磨介质装入量 [L] Grinding Media Quantity	2.7-3.3	3.9-5.5	10-13.5	14.4-20.5	23-32.6	44.7-63.37
外形尺寸 [长宽高] Measurement	L 900	1250	1460	1560	1620	2000
	W 700	800	860	900	1000	1200
	H 950	1350	1580	1420	1550	1850
研磨珠粒径范围 [mm] Grinding Media Diameter	0.6-1.5	0.8-2.5	0.8-2.5	0.8-2.5	0.8-2.5	0.8-2.5
生产量 [kg] Production Capacity	10-2000	30-300	40-400	50-500	70-700	120-1200
空气消耗量 [m³/h] Air Consumption	0-0.3	0-0.4	0-0.5	0-0.6	0-0.6	0-1.5
耗水量 [m³/h] Water Consumption	0.5	0.8	1.2	1.5	2	2.5
进料管径 Feed tube diameter	G3/4"	G3/4"	G1"	G1"	G1 1/2"	G1 1/2"
出料管径 Discharge tube diameter	G1"	G1"	G1"	G1 1/2"	G2"	G2"
水冷管径 Cooling tube diameter	G3/8"	G3/8"	G1/2"	G1/2"	G1/2"	G1/2"
整机重量 [T] Weight	约 1	约 1.2	约 1.3	约 2	约 2.6	约 3

湿法研磨设备

WET GRINDING EQUIPMENT



产品特点 Product characteristics

紧凑的结构设计，操作便捷，实用美观棒销式结构设计，转子棒销对研磨介质产生强烈的撞击作用于物料，对物料进行强行的研磨和分散达到对物料的快速精细研磨。

先进的大流量分离筛结构，保证高效生产，不发生堵塞集成式双端面机械密封，可根据物料特性选择润滑剂高耐磨研磨内筒及分散器可方便更换，材质有合金钢、陶瓷、高分子、不锈钢等多种选择；

螺旋式水循环通道，多部位冷却水设置，散热性能极佳；全防爆按钮操控和科学化的 PLC 触屏操控可选择；进料压力、出料温度、机封润滑油箱液位等多部位安全控制。

The compact construction design makes it s easy to operate, practical and beautiful. Pin type structure, rotating pins impact the beads strongly and act on the material, forced grinding and dispersing achieve fast fine grinding; Advanced langue flow separating screen, ensure high efficient production, no block up. Integrated Double mechanical scale, allowed choosing lubrcnant according to product character. Easy replaced High wear resistant inner grinding chamber and dispersing parts, Allosteel ceramic. high polymer material, stainless steel etc for choice. Serew type force water cycle passageway. multiple positions cooling water setting excellent cooling performance. Full Ex buttons control and Scientific PCL touch screen control for choice Feeding Pressure, Output Temperature, Mechanical scal lubricant oil level etc multiple Safety control.

湿法研磨设备

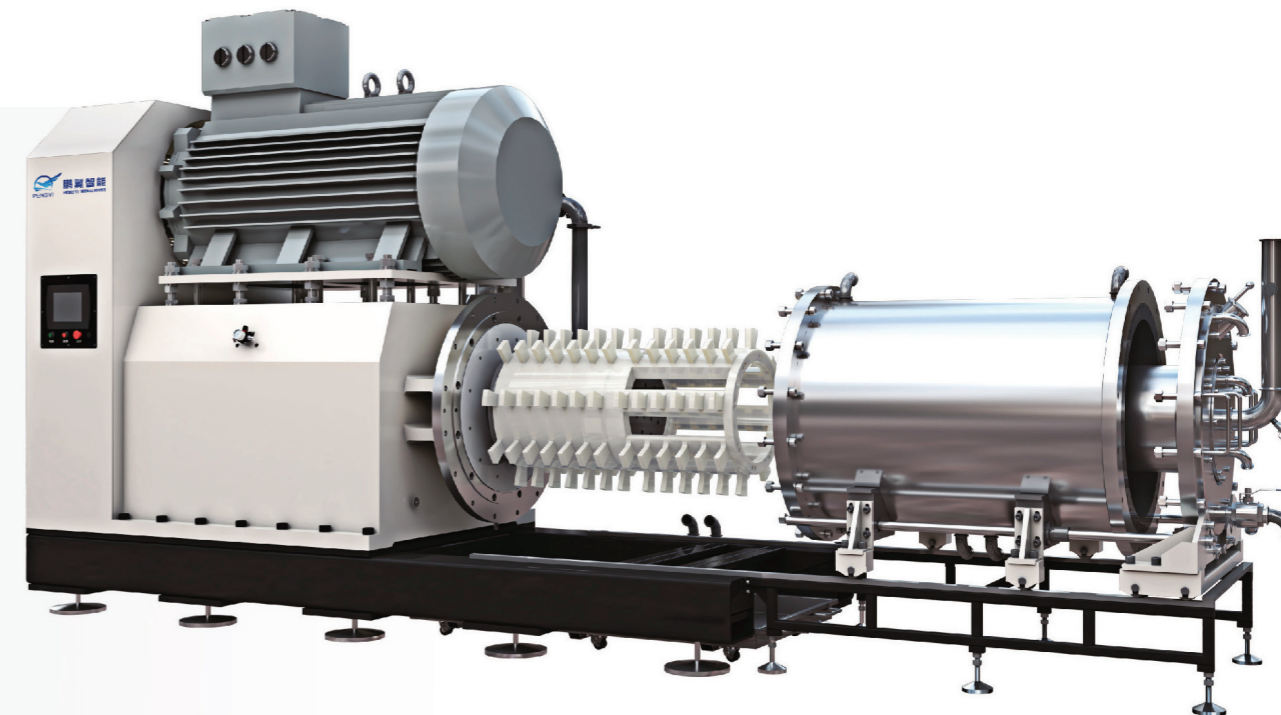
WET GRINDING EQUIPMENT

棒销式高效纳米砂磨机 Pin type Horizontal bead mill

应用场景 Application Scenario

适用于对金属污染敏感物料，纳米级精细研磨。电池行业：磷酸铁锂电池正极材料，硅基负极材料，钛酸锂，硫复合材料等；广泛应用于燃料墨水、颜料墨水、石墨烯、热敏纸图层材料等行业；在纳米材料粉体工程中应用非常广泛。

Suitable for metal sensitive material and material that requires nano grade finish size. Battery Industry. Lithium iron phosphate, Silicon Carbon Nano material Lithium titan ate, Sulphur carbon composites. widely applied in production of dye ink, pigment ink, digital printing ink, ink jet ink, ceramic ink, battery material, pharmaceutical material fluorescent brightener, nano coating material, electric paste, graphene and heat-sensitive paper coating material etc. Widely used in Nano New Material.



产品特点 Product characteristics

- 陶瓷材料转子及研磨筒体，零金属污染，保证成品物料品质。
- 陶瓷转子及筒体良好的导热性能及三重冷却系统，可严格控制成品温度，适用于温度敏感型物料。
- 高分散线速度，为纳米研磨提供高强的剪切力。
- 双端面集装式机械密封，更加稳定的机械性能，提升设备耐久性。
- 精准的零部件加工，各部件的精密配合，保证设备运行的平稳，无振动，无噪音。
- 变频控制，实现能源及成本节约。
- Ceramic material rotor and grinding chamber, zero metal pollution, high quality finish products.
- Triple cooling system, good thermal conductivity for ceramic rotor and chamber, able to control temperature strictly, suitable for temperature sensitive material.
- High dispersing liner speed, providing high and strong shearing force for nano grade grinding.
- Double-end assembly mechanical sealing, stable mechanical function, longer service life.
- Precise parts manufacturing, harmony cooperation for each part, stable operation, no vibration, no noise.
- Variable frequency control device, energy and cost saving.

新能源行业产品规格 New energy industry product specifications

* 取决于所研磨物料粘度、研磨工况、泵浦的输送形式等因素

型号 Model	BSM-20	BSM-30	BSM-60	BSM-90	BSM-150	BSM-250	BSM-400
研磨腔体有效容积 [L] Effective Volume[L]	20	30	60	90	150	250	400
主驱动功率 [KW] Motor Power[KW]	30	37-45	75-90	90-110	185-200	250-280	450-500
适用研磨介质规格 [mm] Media Diameter[mm]	0.3-1.2	0.3-1.2	0.3-1.4	0.3-1.4	0.3-1.6	0.3-1.6	0.3-1.6
加工批量 [L] Batch Capacity[L]	100-1000	200-2000	300-3000	500-3500	800-5500	1000-7500	3000-12000
流量 [kg/h] Flow Rate[kg/h]	100-1500	300-2500	500-3500	700-4500	800-6000	1000-12000	5000-14000
尺寸 [mm] Dimension[mm]	L	1500	1800	2150	2465	2680	5600
	K	1050	1050	1300	1360	1370	1750
	H	1700	1750	2200	2400	2460	2950
重量 [kg] Weight[kg]	1400	1900	3000	5000	7000	8500	9000

湿法研磨设备

WET GRINDING EQUIPMENT

涡轮砂磨机 Turbine type Horizontal bead mill

应用场景 Application Scenario

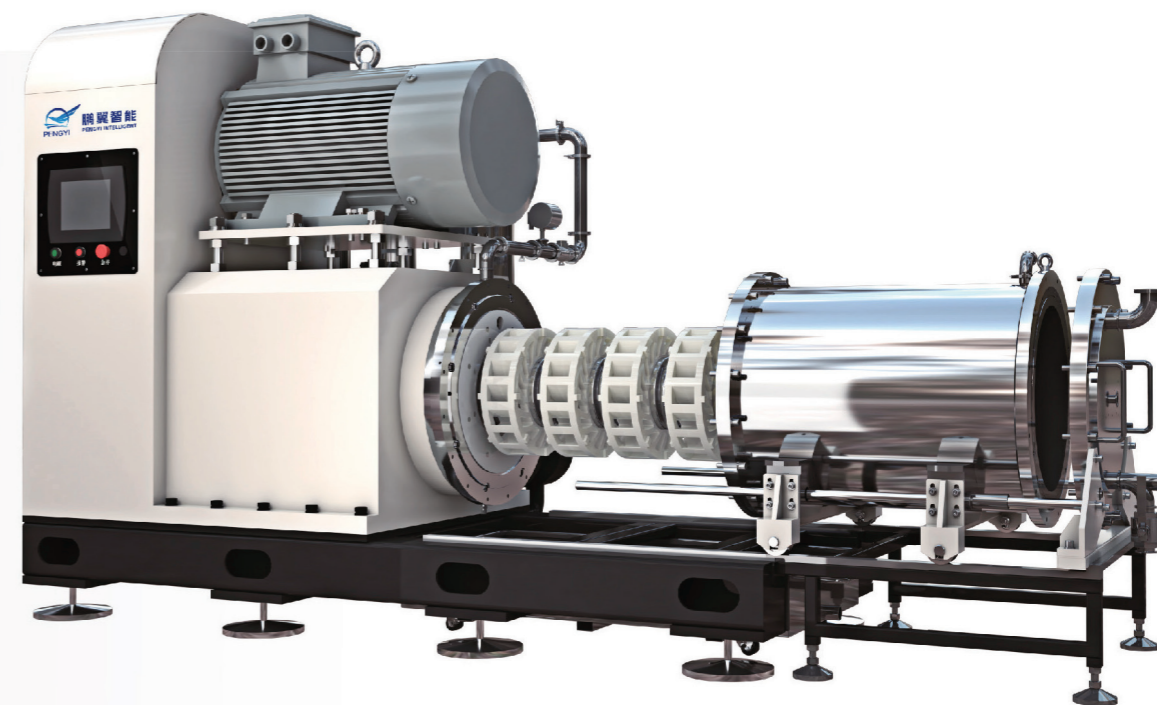
适用于中低粘度物料的纳米级研磨，属于高流量柔性研磨范畴，出料粒径集中，不破坏物料形貌，全陶瓷/PU研磨材质零污染，实践案例超过 2000L 每小时，在碳纳米管领域优势尤为凸显。

Suitable for nano-scale grinding of medium and low viscosity materials. It belongs to the category of high-flow flexible grinding. The particle size of the discharged material is concentrated, which does not destroy the material shape. Ceramic/PU grinding material has zero pollution. Field advantages are particularly prominent.

产品特点 Product characteristics

高速的涡轮式分散器将研磨室内轴向移动的粒子切换成沿圆周方向着若干个粒子流，与传统的单一的粒子流相比，大大增加了剪切破碎的功能。涡轮分散器径向的压力差，使得粒子流不需要强烈接触分散器即可获得极强的涡旋力，避免传统结构中强烈撞击所产生过多的热能损耗，同时提高了破碎当量，延长了分散器的寿命。

High-speed turbine disperser switches the particles moving axially in the grinding chamber into several particle streams along the circumference, which greatly increases the shear and crushing function compared with the traditional single particle stream. The radial pressure difference of the turbine disperser enables the particle flow to obtain a strong vortex force without strong contact with the disperser, avoiding the excessive heat loss caused by the strong impact in the traditional structure, and at the same time improving the crushing equivalent and prolonging the diffuser life.



产品规格 Product specification

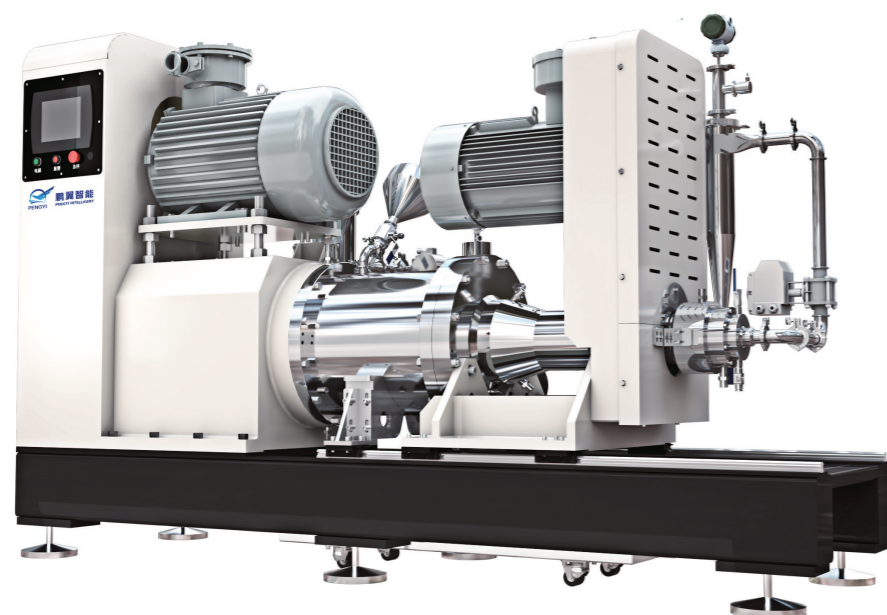
* 取决于所研磨物料粘度、研磨工况、泵浦的输送形式等因素

型号 Model	TSM-10	TSM-30	TSM-60	TSM-90	TSM-150	TSM-250
研磨腔体有效容积 [L] Effective Volume[L]	10	30	60	90	150	250
主驱动功率 [KW] Motor Power[KW]	18.5-22	37-45	75-90	90-110	185-200	250-280
适用研磨介质规格 [mm] Media Diameter[mm]	0.3-2.0	0.3-2.0	0.3-2.0	0.3-2.0	0.3-2.0	0.3-2.0
加工批量 [L] Batch Capacity[L]	50-200	200-1500	300-2000	500-2500	800-4500	800-6000
流量 [kg/h] Flow Rate[kg/h]	200-1000	300-2000	500-2000	700-3500	800-5000	800-6500
尺寸 [mm] Dimension[mm]	L 1200 K 1100 H 1600	1700 1050 1850	2150 1150 1900	2400 1200 2000	2700 1200 2300	3300 1800 2500
重量 [kg] Weight[kg]	960	1900	3000	4700	6700	8200

湿法研磨设备

WET GRINDING EQUIPMENT

双动力离心砂磨机 Dual power centrifugal bead mill



应用场景 Application Scenario

高端纳米材料制备：适用于颗粒物料纳米级超细研磨，尤其适用于无机盐晶体类、金属类材料的研磨，例如磷酸锰铁锂、纳米硅、催化剂等。

Preparation of high-end nano materials: it is suitable for ultrafine grinding of granular materials at nano level especially for grinding of inorganic salt crystals and metal materials, such as lithium iron manganese phosphate, nano silicon, catalysts, etc

产品特点 product characteristics

1. 可以使用 0.05MM 的进行稳定研磨分散；
2. 独特的离心技术和旋流分离器结构避免了堵料和漏球的现象；
3. 特殊的夹套冷却层在高线速度、多遍次研磨时能快速的冷却；
4. 独特的研磨系统研磨转子和棒销设计在研磨时候能根据不同细度对浆料进行离心避免较细颗粒继续参与无效研磨。

产品规格 Product specification

* 取决于所研磨物料粘度、研磨工况、泵浦的输送形式等因素

实验室型号 Lab Bead Model	NSM-0.5	NSM-2	NSM-10	NSM-30	NSM-60	NSM-90	NSM-150
研磨腔体有效容积 [L] Effective Volume[L]	0.5	2	10	30	60	90	150
主驱动功率 [KW] Motor Power[KW]	4	7.5	18.5-22	37-45	75-90	90-110	132-160
动态分离器驱动功率 [KW] dynamic separator driving power[KW]	—	—	7.5	11	18.5	22	37
动态分离器驱动转速 [rpm] dynamic separator speed[rpm]	3000	3000	1450	1450	960	960	960
适用研磨介质规格 [mm] Media Diameter[mm]	0.05-2.0	0.05-2.0	0.05-2.0	0.05-2.0	0.05-2.0	0.05-2.0	0.05-2.0
加工批量 [L] Batch Capacity[L]	2-10	10-2000	50-200	200-1500	300-2000	500-2500	800-4500
流量 [kg/h] Flow Rate[kg/h]	15-100	200-1000	200-1000	300-2000	500-2000	700-3500	800-5000
尺寸 [mm] Dimension[mm]	L	950	1150	2500	3100	3850	5050
	K	700	1110	1100	1300	1450	1650
	H	1000	1250	1600	1650	1900	2300
重量 [kg] Weight[kg]	165	350	1500	1900	3500	5000	7000

1. It can use 0.05mm grinding media for stable grinding and dispersion.
2. Unique centrifugal technology and cyclone separator structure avoid the phenomenon of material blocking and leaking balls.
3. The special jacket cooling layer can cool quickly at high leaner speed and multiple times of grinding.
4. The unique grinding system grinding rotor and rod pin design can centrifuge the slurry according to different fineness during grinding to avoid finer particles continuing to participate in ineffective grinding.

湿法研磨设备

WET GRINDING EQUIPMENT

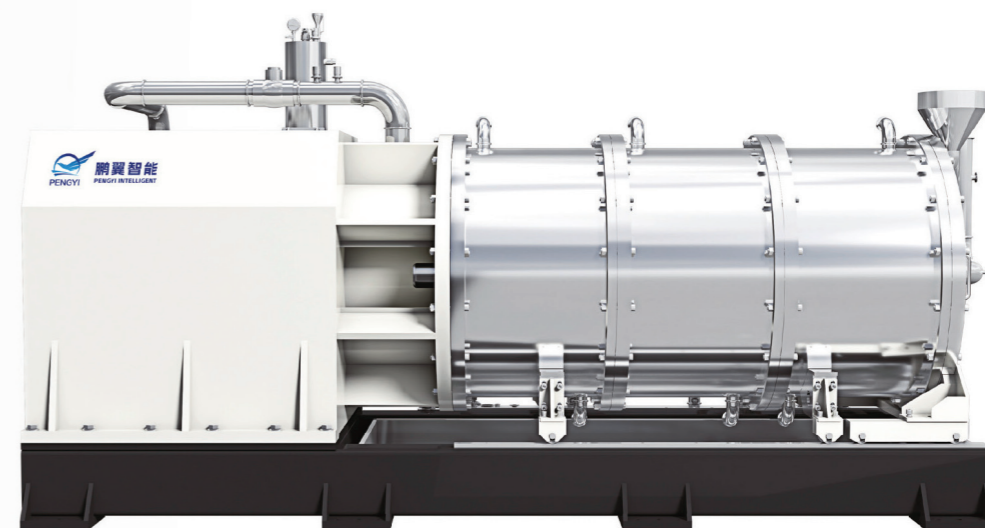
磷酸铁锂专用纳米砂磨机

Special nano sand mill for lithium iron phosphate

应用场景 Application Scenario

电池行业：磷酸铁锂电池正极材料，钛酸锂，硫复合材料等。

Battery industry: lithium iron phosphate cathode materials, lithium titanate, sulfur composite materials, etc.



产品特点 product characteristics

研磨介质分离，更有效的研磨工艺，全新设计的 OCS 离心分离装置，流量大，加装超声波装置保证出料顺畅性；拼装式多流道动态分级轮研磨转子设计保持研磨珠远离筛网，以便使用较小的研磨珠实现更有效的精细研磨加工，研磨后的物料粒径分布窄。

Separation of grinding media, more efficient grinding technology, newly designed OCS centrifugal separation device, large flow, and the ultrasonic device to ensure smooth discharge; The design of the assembled multi-channel dynamic classification wheel grinding rotor keeps the grinding beads away from the screen, so that the smaller grinding beads can be used to achieve more effective grinding processing, and the finished material particle size distribution is narrow.

产品规格 Product specification

* 取决于所研磨物料粘度、研磨工况、泵浦的输送形式等因素

型号 Model	直驱 1000	
研磨腔体有效容积 [L] Effective Volume[L]	1000	
主驱动功率 [KW] Motor Power[KW]	650/690	
适用研磨介质规格 [mm] Media Diameter[mm]	0.2-1.2	
线速度 [m/s](可调) Linear Speed[m/s](Adjustable)	0-16.5	
尺寸 [mm] Dimension[mm]	L	5700
	K	1900
	H	1900
重量 [kg] Weight[kg]	15000	

湿法研磨设备

WET GRINDING EQUIPMENT

立式砂磨机 Vertical sand mill

应用场景 Application Scenario

在应用行业方面，立式砂磨机广泛应用于油漆涂料、化妆品、食品、日化、染料、油墨、药品、铁氧体、感光胶片等工业领域。

In terms of application industries, vertical sand mills are widely used in fields such as paints and coatings, cosmetics, food, daily chemicals, dyes, inks, pharmaceuticals, ferrites, photo-sensitive films, and more.

技术参数 Technical Parameter

型号 / 参数	电机功率 (Kw)	研磨腔容积 (L)	研磨介质 (mm)	进料流量 (L/h)	冷却水耗量 (m ³ /h)
LPM-2	7.5	2	0.05-2.0	150	0.6
LPM-6	15	6	0.05-2.0	400	1.5
LPM-15	22	15	0.05-2.0	1200	2
LPM-30	45	30	0.05-2.0	1500	2.5
LPM-60	90	60	0.05-2.0	2000	4
LPM-150	160	150	0.05-2.0	4000	6
LPM-400	355	400	0.05-2.0	6000	10
LPM-1000	650	1000	0.1-2.0	8000	18



产品特点 product characteristics

结构设计: 立式砂磨机采用立式结构，具有超前设计理念，主轴竖向安装，使得设备运行更稳定，不易变形。

无筛网结构: 它具有特殊的离心分离系统，无需筛网，因此不会堵料。这使得它可以使用更细小的锆珠（0.03mm-0.3mm及以上），达到更细的研磨极限。

研磨介质利用率: 立式砂磨机的研磨介质利用率高达 90%，无需定期筛除锆珠，减少了锆珠的淘汰。

研磨效果: 研磨后的粒径分布更窄，离心分离器具有分级功能，优先排出较小颗粒，使较大颗粒继续研磨。

维护方便: 研磨桶可自动升降，拆卸便捷，维护轻松，一人即可维护多台设备。

机型多样: 提供 1-1000L 的全系列机型，满足不同产量的生产需求。

节能高效: 搭配永磁节能电机，单位能耗比传统设备低 20%，效率比传统卧式高出 30% 以上。

Structural Design: The vertical sand mill features a vertical structure with an advanced design concept. The vertical installation of the main shaft ensures stable operation and prevents deformation of the equipment.

Screenless Design: It has a unique centrifugal separation system without a screen, preventing material blockage. This allows for the use of finer zirconium beads (0.03mm-0.3mm and above), reaching a finer grinding limit.

Utilization Rate of Grinding Media: The vertical sand mill has a high utilization rate of grinding media, eliminating the need for regular screening of zirconium beads and reducing the replacement of zirconium beads.

Grinding Effect: The particle size distribution after grinding is narrower, with the centrifugal separator having a classification function that preferentially discharges smaller particles, allowing larger particles to continue grinding.

Ease of Maintenance: The grinding barrel can be automatically lifted and lowered, making it easy to dismantle and maintain, allowing one person to maintain multiple machines.

Variety of Models: A full range of models from 1L to 1000L is available to meet different production volume requirements.

Energy-saving and Efficient: Equipped with a permanent magnet energy-saving motor, the unit energy consumption is 20% lower than traditional equipment, and the efficiency is more than 30% higher than that of traditional horizontal mills.

湿法研磨设备

WET GRINDING EQUIPMENT

篮式珠磨机 Basket Mill

应用场景 Application Scenario

电池行业：磷酸铁电池正极材料等

数码耗材：数码喷墨水等

陶瓷材料：氧化铝、氧化锆、碳化硅等

矿物颜料：钛白粉、碳酸钙、氧化铁等医药制剂行业

Battery industry: anode material of Lithium iron phosphate battery. Digital consumptive material: ink for digital air spray.

Ceramic material: aluminum oxide, zirconium oxide, silicon carbide etc.

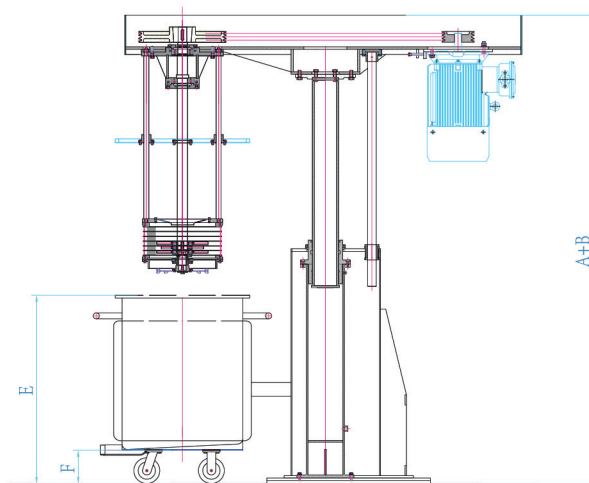
Mineral pigment: titanium pigment, calcium carbonate, iron oxide etc.

Medicaments Industry .

产品特点 product characteristics

变频调速、安全防爆、混合、研磨、分散一机合成；新一代研磨设备同时完成分散、研磨、效率高节省能源、占地小、操作简单方便，易清洗；在密封环境中研磨，安全、环保、无污染。

Adjust Speed by Converter ,Safe Explosion proof Mixing, Grinding and Dispersing together. New mill equipment, disperse and together,good efficiency Save energy,small space, easy operation and clean out working in the seal area, safety , environment protect,nopollution.



产品规格 Product specification

* 取决于所研磨物料粘度、研磨工况、泵浦的输送形式等因素

型号 Model	SBM200		SBM300		SBM500			
配套功率 power[KW/HP]	15/20		18.5/25		22/30			
适合磨量 Capacity[L]	100-200		200-300		200-500			
升降高度 Lifting Distance[mm]	1200		1200		1200			
介质充填量 Feeding Capacity[kg]	36		38		40			
研磨缸格 Spec of Mill Tank[mm]	φ700*900		φ800*900		φ900*900			
外型尺寸 Dimensions	A	B	1825	1200	1825	1200	2000	1200
	C	D	750	700	750	700	800	800
	E	F	1080	180	1080	180	1180	180
整机重量 Whole Weigh[kg]	1500		1700		1900			

鹏翼智能装备一览

PENGYIINTELLIGENT MACHINE LIST

搅拌混合系统

- 双行星动力混合机
- 双行星搅拌压料一体机
- 立式捏合机

搅拌混合系统

AGITATOR MIXING SYSTEM

主推

双行星动力混合机

Double planetary power mixer



双行星动力混合机 Double planetary power mixer

应用场景 Application Scenario

本机适用于中高粘度产品的分散、搅拌、混合。适用粘度在 10000CP-1000000CP 左右。应用于新能源行业（正负极电池浆料）、工程胶黏剂行业、涂料（油漆）行业、油墨行业、电子（电气浆料膏体）行业、医药行业、食品行业、精细化工行业。

This equipment is suitable for dispersing and mixing of middle to high viscosity product, which is around 10,000cp-1000,00cp.it can use on new energy (negative and positive slurry),project adhesive, coating (paint, ink,electrical (electrical paste), pharma,food, fine chemical industry.

产品特点 product characteristics

- 1、线速度高：线速度最高可达 25M/S，分散时间大大缩短；搅拌完后的浆料颗粒度小、一致性高，有效解决浆料团聚现象。
- 2、轴承采用瑞典 SKF 全进口角接触球轴承，大大提高了搅拌转速以及使用寿命（线速度在 21M/S 情况下连续 24 小时运转总寿命 3 年以上）。
- 3、密封性能高，无漏油漏气现象：两套机械密封加上软、硬等密封，行星传动箱采用全密封结构，轴承位经过全新设计，合理分布轴承限位，从而减小轴承的磨损；真空度空载 24 小时保压 -0.092 以上，确保搅拌过程无漏油漏气现象。
- 4、浆与桶内壁间隙：浆与浆、浆与桶壁、浆与桶底、之间间隙合理；搅拌浆底部有刮底设计，桶体内圆度高，小于 0.2MM。
5. 扭矩输出大输出扭矩经过计算机模拟计算，强度高，适合高粘度、高固含量锂离子电池动力电池正负极浆料（磷酸铁锂、三元、三元高镍、锰酸钾、钴酸锂等），能够适应不同工艺（干法混料、湿法混料）。

- 1.High line speed: The line speed can reach to 25mis, shorten the dispersing time.The particle size of battery slurry is small and high uniformity solve the problem of polymerization.
- 2.It adopts SKF Sweden import angular contact ball bearing, large increase the mixing speed and using life(The using life is more than 3 years under 21m/s and continuous 24hr working).
- 3.High tightness, no air leakiness and oil leakiness: 2 sets of mechanical seal plus soft,hard seals etc.the planetary transmission box adopts complete seal structure,New design of bearing position, reasonable distribution of the bearing limit,reduce the wearing of bearing. the non load vacuun keeps above -0.092 in 24hours,ensure that no air leakiness and oil leakiness during the mixing;
- 4.The gap between tank and paddles: paddles to paddles,paddles to tank wall,paddles to tank bottom,the gap is small,scraper design under the mixing paddles,high roundness inner the tank, The deviation is less than 0.2mm;
- 5.Large torsion output: the torque output is simulation calculated by computer,High strength, suitable for high viscosity,high solid content Positive and negative pole slurry of Lithium battery(Lithium iron phosphate ternary ternary high nickel Potassium manganate,Lithium Cobaltate etc) suitable for different process technology (dry mix, wet mix).

双行星动力混合机 2L-30L



产品规格 Product specification

项目 items	2L	5L	10L	20L	30L
型号 Model	2L	5L	10L	20L	30L
桶体工作容积 Tank working Capacity	2L	5L	10L	20L	30L
桶体设计容积 Tank Design Size	3L	7.4L	14L	29L	44L
桶体内尺寸 (mm) Tank size	180*120	250*150	300*200	300*250	400*350
公转电机 (KW) Revolution Motor	1.1	1.5	2.2	2.2	3
公转转速 (RPM) Revolution Speed	0-51	0-51	0-48	0-48	0-43
搅拌浆转速 (RPM) Mix Speed	0-112	0-104	0-100	0-84	0-84
分散电机 (KW) Disperse Motor	1.1	1.5	3	4	4
分散转速 (RPM) Disperse Speed	0-7500	0-6800	0-5200	0-4600	0-4200
分散盘线速度 (m/s) Disperse plate linear Velocity			0-23		
重量 (kg) Suttle	500	670	810	960	1200
外形尺寸 (mm) 长 * 宽 * 高 Measurement(L*W*H)	1100*660*1300	1250*770*1500	1350*800*1750	1350*800*1800	1700*950*1900

双行星动力混合机 60L-500L



产品规格 Product specification

项目 items	60L	100L	200L	300L	500L
型号 Model					
桶体工作容积 Tank working Capacity	60L	100L	200L	300L	500L
桶体设计容积 Tank Design Size	88L	149L	287L	368L	670L
桶体内尺寸 (mm) Tank size	500*450	650*450	750*650	850*650	1000*850
公转电机 (KW) Revolution Motor	5.5	11	22	30	37
公转转速 (RPM) Revolution Speed	0-36	0-30	0-28	0-26	0-22
搅拌桨转速 (RPM) Mix Speed	0-53	0-46	0-39	0-39	0-35
分散电机 (KW) Disperse Motor	7.5	15	30	37	45
分散转速 (RPM) Disperse Speed	0-4500	0-3700	0-2800	0-2200	0-2000
分散盘线速度 (m/s) Disperse plate linear Velocity			0-23		
重量 (kg) Suttle	1900	2700	4200	7700	10300
外形尺寸 (mm) 长*宽*高 Measurement(L*W*H)	1950*1200*2150	2300*1300*2400	2500*1400*3000	3200*1600*3200	3600*1950*3900

双行星动力混合机 650L-3000L



产品规格 Product specification

项目 items	650L	1000L	1500L	2000L	3000L
型号 Model					
桶体工作容积 Tank working Capacity	650L	1000L	1500L	2000L	3000L
桶体设计容积 Tank Design Size	807L	1327L	1846L	2300L	3400L
桶体内尺寸 (mm) Tank size	1100*850	1300*1000	1400*1200	1500*1300	1700*1500
公转电机 (KW) Revolution Motor	45	55	75	90	110
公转转速 (RPM) Revolution Speed	0-22	0-20	0-15	0-13	00-9
搅拌桨转速 (RPM) Mix Speed	0-35	0-36	0-35	0-35	0-24
分散电机 (KW) Disperse Motor	55	75	90	110	132
分散转速 (RPM) Disperse Speed	0-2000	0-1800	0-1500	0-1500	0-1000
分散盘线速度 (m/s) Disperse plate linear Velocity			0-23		
重量 (kg) Suttle	11000	13500	16800	19500	23500
外形尺寸 (mm) 长*宽*高 Measurement(L*W*H)	3800*1700*4200	4300*1950*5000	4320*2100*4530	4430*2050*4950	4660*2280*5200

搅拌混合系统

AGITATOR MIXING SYSTEM

双行星搅拌压料一体机

Double planetary mixing press machine

应用场景 Application Scenario

本机适用于中高粘度产品的分散、搅拌、混合。适用粘度在 10000CP-1000000CP 左右。应用于工程胶黏剂行业、涂料(油漆)行业、油墨行业、电子(电气浆料膏体)行业、医药行业、食品行业、精细化工行业。

This equipment is suitable for for dispersing and mixing of middle to high viscosity product, which is around 10000cp-1,000,000cp. it can use on project adhesive, coating (paint), ink, electrical (electrical paste), pharma, food, fine chemical industry.

产品特点 product characteristics

1. 筒体可靠密封，可进行真空减压状态下的搅拌操作。
2. 筒体带有夹套，可进行加热或冷却，以满足工艺需要。
3. 可更换筒体，内壁经过精密加工，清洗方便。
4. 搅拌桨有公转和自转两种运动方式，使物料可以达到很好的混合效果。
5. 公、自转均采用变频调速，以适应不同的物料及工艺。
6. 旋转系统设有刮刀，用于刮净筒体内壁粘附的物料。
7. 整机上体采用液压升降，可迅速更换筒体完成操作。

1. The cylinder is reliably sealed, and the mixing can be carried out in a vacuum decompression state.
2. The cylinder is equipped with a jacket, which can be heated or cooled to meet the needs of the process.
3. The cylinder can be replaced, the inner wall is precisely processed, and it is easy to clean.
4. The mixing paddle has two modes of revolution and rotation, so that the material can achieve a good mixing effect.
5. Both the revolution and rotation adopt frequency conversion speed regulation to adapt to different materials and processes.
6. The rotating system is equipped with a scraper to scrape the material adhered to the inner wall of the cylinder. The upper body of the whole machine adopts hydraulic lifting, which can quickly replace the cylinder to complete the operation.



产品规格 Product specification

型号 Model	项目 items	2L	5L	10L	20L
	桶体工作容积 Tank working Capacity	2L	5L	10L	20L
	桶体设计容积 Tank Design Size	3L	7.4L	14L	29L
	桶体内尺寸 (mm) Tank size	180*120	250*150	300*200	300*250
	公转电机 (KW) Revolution Motor	1.1	1.5	2.2	2.2
	公转转速 (RPM) Revolution Speed	0-51	0-51	0-48	0-48
	搅拌桨转速 (RPM) Mix Speed	0-112	0-104	0-100	0-84
	分散电机 (KW) Disperse Motor	1.1	1.5	3	4
	分散转速 (RPM) Disperse Speed	0-7500	0-6800	0-5200	0-4600
	分散盘线速度 (m/s) Disperse plate linear Velocity	0-23			
	重量 (kg) Suttle	950	1260	1500	1950
	外形尺寸 (mm) 长 * 宽 * 高 Measurement(L*W*H)	1350*1000*1810	1500*1000*2050	1700*1400*2100	1800*1500*2500

搅拌混合系统

AGITATOR MIXING SYSTEM

立式捏合机

Vertical kneading machine

应用场景 Application Scenario

适用于粘度在 10000CP-2000000CP 左右。这是我公司根据日益变化的新材料要求精心研制的一款专利产品，广泛适用于高粘度、高弹性物料的混炼和捏合，可应用于锂电材料、橡胶、密封胶、热熔胶、食品胶基、医药、军工炸药、航空航天等产品。

Which is around 10,000cp-2,000,000cp.This is a patented product carefully developed by our company according to the ever-changing requirements of new materials. It is widely used in the mixing and kneading of high-viscosity and high-elasticity materials, including lithium battery materials, rubber, sealants, hot melt adhesives, food Gum base, medicine, military explosives, aerospace,etc.

产品特点 product characteristics

1. 行星式搅拌结构，绝无死角，效率更高。
2. 可根据不同产品设计成双桨和三桨结构，适应产品范围更广。
3. 既适用于无溶剂干法混合，又适用于高粘度湿法混合。
4. 五轴数控机床精加工的搅拌桨精度极高，捏合效果突出。
5. 可抽真空操作，满足一些产品的真空环境要求。
6. 筒体升降结构，有利于实现自动化投料，出料清洗也更方便。

- 1.Planetary stirring structure, no mixing dead ends with higher efficiency.
- 2.According to different materials, it can be designed into double-paddle or three-paddle structure, which can adapt to a wider range of materials.
- 3.It is suitable for both solvent-free dry mixing and high viscosity wet mixing.
- 4.The precision machining of the tiring paddle by the five-axis CNC machine tool is extremely high,and the kneading effect is outstanding.
- 5.It can be vacuum operated to meet the vacuum environment requirements of some materials.
- 6.The lifting structure of the cylinder is conducive to the realization of automatic feeding, the discharging and cleaning are also more convenient.



产品规格 Product specification

型号 Lab Bead Model	NH-02	NH-05	NHJ-15	NHJ-30	NHJ-60	NHJ-100	NHJ-150
使用容积 Effective Volume	2L	5L	15L	30L	60L	100L	150L
电机功率 Motor Power[kw]	1.1-1.5KW	2.2-3KW	3-4KW	5.5-7.5KW	11-15KW	15-18.5KW	22-30KW
真空度 Media Diameter[mm]	-0.095MPA	-0.095MPA	-0.095MPA	-0.095MPA	-0.095MPA	-0.095MPA	-0.095MPA

型号 Lab Bead Model	NHJ-200	NHJ-300	NH-400	NHJ-500	NH-650	NHJ-1000
使用容积 Effective Volume	200L	300L	400L	500L	650L	1000L
电机功率 Motor Power[kw]	30-37KW	37-45KW	45-55KW	55-75KW	75-90KW	110-132KW
真空度 Media Diameter[mm]	-0.095MPA	-0.095MPA	-0.095MPA	-0.095MPA	-0.095MPA	-0.095MPA

鹏翼智能装备一览

PENGYIINTELLIGENT MACHINE LIST

搅拌分散设备

高低速双轴搅拌机

同心双轴搅拌机

防爆变频搅拌机

搅拌分散设备

AGITATING AND DISPERSING EQUIPMENT

高低速双轴搅拌机 Double shafts mixer

应用场景 Application Scenario

低速轴配置的蝶式桨对容器内物料进行混合、高速搅拌克服搅拌死区，从而达到对物料进行全面的有效分散，本机特别适合于对高粘度物料的搅拌、分散。

The materials in the container are mixed by the papilionaceous our fixed on the low speed shaft. Low speed mixing is free of mixing dead area and the materials can be dispersed thoroughly and effectively. This machine is especially suitable for mixing and dispersing materials of high viscosity.



产品规格 Product specification

型号 Model	SGD-15/7.5	SGD-18.5/11	SGD-22/11	SGD-30/15
高速轴电机功率 [KW] High-speed Shaft motor power	15	18.5	22	30
高轴转速 [r/min] High-speed Shaft speed	1450	1450	1450	1450
低速轴电机功率 [KW] Low speed Shaft motor power	7.5	11	11	15
低轴转速 [r/min] Lows peed Shaft speed	65	65	86	86
蝶形桨直径 [mm] Oar diameter	760	800	860	950
尺寸 [mm] Dimension[mm]	A 2765	2870	2870	3050
	B 2050		2350	2400
	C 1000	1200	1200	1200
筒体容积 [L] Tub Capacity	450	500	600	800
升降行程 [mm] Travel height	1000	1000	1200	1200
整机重量 [kg] Whole Weighe	2100	2300	2500	2600

搅拌分散设备

AGITATING AND DISPERSING EQUIPMENT

同心双轴搅拌机

Concentric Double-shaft Mixer

应用场景 Application Scenario

本机广泛适用于化工、建材、电子、涂料、食品、制药等行业，适用于粘度直在 3000—300000CPS 范围物质的生产，是进行液液或固液混合、分散、反应、均质的理想设备。

This machine is widely used in Chemical, construction material, electronic coatings, food pharmacy And So Oil, it suit for production of material which viscosity range 3000-30000cps; it is the best Choise of liquid or liquid-solid mixing, dispersing, reacting machinery.

产品特点 Product characteristics

筒体内有高速搅拌和低速搅拌两组搅拌轴系，主轴均在容器中心，即同心双轴，高速轴转速可调，通过变频实现调速，锯齿型搅拌桨可对被处理物质施以高剪切力，并使物料产生轴向流动。低速搅拌桨对容器内壁附近物料进行挠括搅拌，并使物料产生缓慢切向流动，搅拌桨设有刮刀可刮下粘附在罐壁上的物料。这种组合机构使整个容器内形成纵横交错的流动，可使物料得到有效的分散混合。

There are high speed dispersing and low heed main shaft is at center of vesselit is concentric double shaft.The speed mixing double mixing system in the vessel,The of high speed dispersing shaft is adiustable via inverter and tooth type disnersinodis work with materlal high shearing force and let material shaft direction..The shaft scratch the material near tomovevessel wall. and movemateriaon cutting direction slowly.There are scraper on mixing shafwhich can scratch material on vessel wall.This kind of cooperation system make the materiacrisscross,and get effective dispersing and mixing.



产品规格 Product specification

工作容积：100-5000L

搅拌功率：1.5KW -160KW

分散转速：0-1450RPM(0-960RPM)

搅拌转速：0-30RPM(0-60RPM,0-150RPM) 搅拌转速与浆叶型式

匹配与搅拌工艺需求匹配。

安装形式：平台安装、落地安装

视物料粘度决定，可支持定制。

Working volume: 100-5000L

Mixing motor power: 1.5KW-160KW

Dispersing speed: 0-1450rpm (0-960rpm)

Mixing speed: 0-30rpm (0-60rpm, 0-150rpm)Mixing speed is matched by blade type and mixing process requirements

Installation mode: platform installation or ground installation

Depending on the viscosity of the material, which can be customized.

搅拌分散设备

AGITATING AND DISPERSING EQUIPMENT

防爆变频搅拌机 high speed dissolver

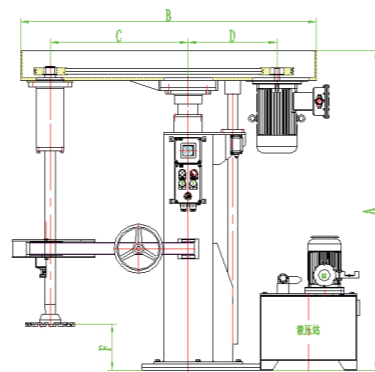
应用场景 Application Scenario

GFS-RN 系列搅拌机适用于油漆、油墨、涂料、染料等化工行业及造纸行业对液固相物料进行湿式分散搅拌。

This kind of mixers are suitable for producing paint ink, coating, dyestuff and soon in chemical industry, and also for paper making industry. The mixers are used for wet dispersing and mixing liquid-solid materials.

产品特点 Product characteristics

- | | |
|----------------------------|--|
| 1. 防爆和不防爆可选 | 1. Explosion proof and not are optional |
| 2. 液压升降和气动升降可选 | 2. Hydraulic lifting and pneumatic lifting are optional |
| 3. 选配伸缩平盖 | 3. Telescopic flat cover is optional |
| 4. 选配夹筒器 | 4. Tank clamp is optional |
| 5. 选配测温传感器 | 5. A temperature sensor is optional |
| 6. 选配升降电子限位，拉缸在位检测并联动主机启动。 | 6. Lifting electronic limit is optional, pull cylinder in place detection and linkage host start |
| 7. 选配 PLC 触屏控制 | 7. PLC touch screen control is optional |



产品规格 Product specification

型号 Model	主电机功率 Main Motor Power(KW/HP)	升降高度 Elevating Travel(mm)	升降主轴转速 Main Shaft Revolution(r/min)	搅拌容量 Mixing capacity(L)	分散盘直径 Dispersing Plate Dia(mm)	整机重量 Mil Weight (Kg)	外型尺寸 Measurement					液压站电机 Hydraulic station electrical machinery	
							A	B	C	D	F		
GFS-RN-1.5	1.5-2.2	700	0-1500 或 0-3000	50	150	350	1212	1250	600	300	250	0.55KW	
GFS-RN-3	3	1000		80-100	200	470	1616	1500	700	450	250		
GFS-RN-4	4	1000		100-120	250	500	1616	1500	700	450	250		
GFS-RN-5.5	5.5	1000		120-150	250	800	1655	1650	800	450	280		
GFS-RN-7.5	7.5	1000		200-300	250	850	1655	1650	800	450	280		
GFS-RN-11	11	1200		500-700	300	900	1868	2096	1000	580	290		
GFS-RN-15	15	1200		800-1000	300	950	1868	2096	1000	580	290		
GFS-RN-18.5	18.5	1200		1000-1200	350	1000	1868	2096	1000	580	290		
GFS-RN-22	22	1200		1200-1500	350	1100	1875	2096	1000	580	290		
GFS-RN-30	30	1200		1600-1800	400	1200	1955	2150	1200	500	300		
GFS-RN-37	37	1200		1800-2000	400	1300	1955	2150	1200	500	300		1.1KW

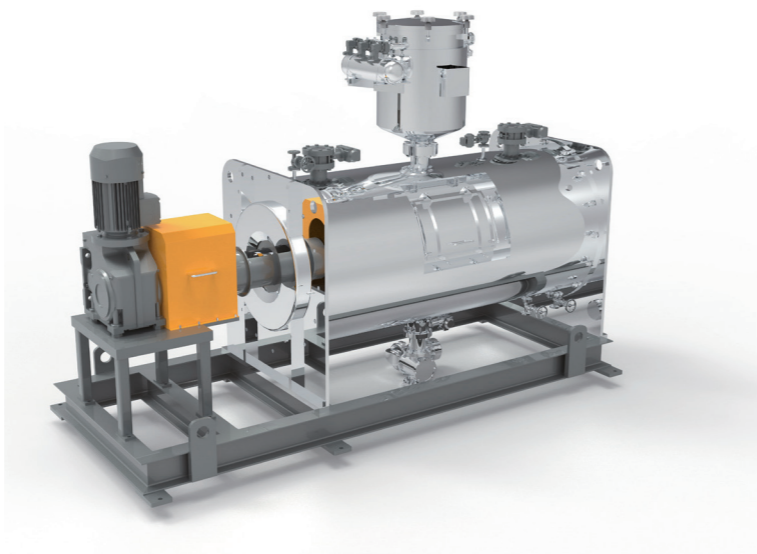
相关配套设备

RELATED EQUIPMENT

卧式螺带混合机 Horizontal ribbon mixer

1. 应用于粉体+粉体、粉体+少量液体、低粘度液体混合搅拌；
2. 典型应用产品有锂电正极材料、前驱体材料、真石漆、饲料、农药、塑料等；
3. 规格从0.5立方到35立方。

This equipment can be used for mixing of powder-powder, powder-minor liquid and low viscosity liquid. Typical applied for lithium battery cathode materials, precursor materials, real stone paint, feed, pesticide, plastic, etc. The size ranges from 0.5 cubic meters to 35 cubic meters.

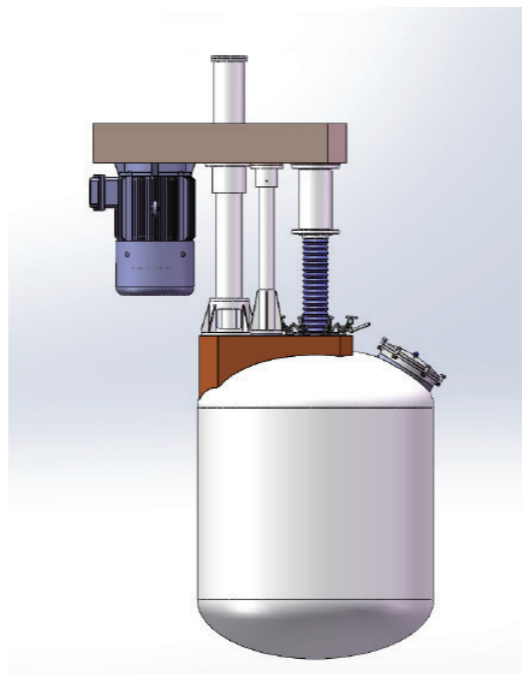


座缸升降型高速搅拌釜

Cylinder type hydraulic lift disperser

1. 广泛应用于涂料、农药、颜料、染料、油墨等行业；
2. 根据不同要求，可做成全封闭结构，可抽真空可加压，也可做成非封闭型结构，高速搅拌轴一定范围的升降操作可使物料在短时间迅速得到分散混合；
3. 规格从1000L到10000L。

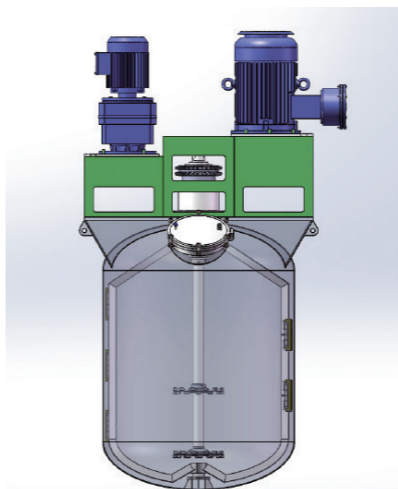
This equipment is widely used in coating, pesticide, pigment, dye, ink and other industries. According to different requirements, it can be made into a fully enclosed or open structure, can be vacuumized and pressurized. The lifting operation of the high-speed stirring shaft in a certain range can quickly disperse and mix materials in a short time. The machine capacity is from 1000L to 10000L.



同心双轴高速搅拌釜 Concentric double shaft mixer

广泛应用于涂料、农药、颜料、染料、油墨等行业，尤其适合稠厚浆料的配料分散操作；根据不同要求，可做成全封闭结构，可抽真空可加压，也可做成非封闭型结构；刮壁搅拌桨的设计可使物料搅拌更充分，效率更高，高速搅拌轴还能做成可升降结构以适应不同产品需求；规格从1000L到10000L。

This equipment is widely used in coating, pesticide, pigment, dye, ink and other industries, especially suitable for dispersing the high solid content slurry. According to different requirements, the mixing tank can be made into a fully enclosed or open structure, can be vacuumized and pressurized. The scraper can make the material more fully mixed and more efficient, lift able structure is available to meet different needs, capacity is from 1000L to 10000L.



同心双轴螺带搅拌釜 Mesh filter

应用于高固含量产品，比如真石漆、质感漆、多彩涂料、颜料、建筑腻子等；根据不同要求，可做成全封闭或易敞开结构；刮壁搅拌桨与螺带搅拌桨配合使用，使物料搅拌无死角，均匀度高；规格从2立方到40立方。

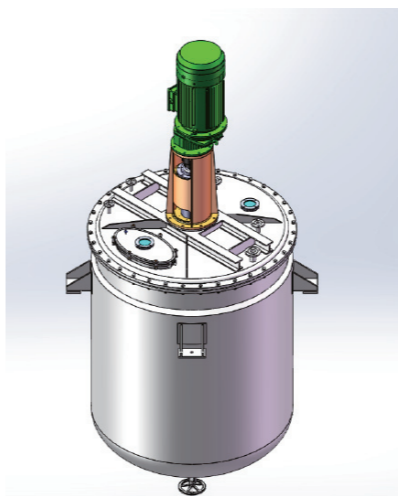
This equipment is mainly used for high solid content products, such as real stone paint, texture paint, colorful paint, pigment, architectural putty, etc. According to different requirements, it can be made into a fully enclosed or open structure. The scraper works together with the screw mixing paddle, so that the material can be mixed without dead angle and with high uniformity. Capacity is from 2 cubic meters to 40 cubic meters.



正极材料前驱体反应釜 Positive material precursor reactor

应用于锂电池正极材料前驱体的制造；独特的搅拌器形式和釜体结构可以达到理想的液体流动状态，能够优化晶核状态，形成球形度好、分布均匀、状态稳定的前驱体反应液；可在线监测酸碱度和温度，并通过PLC控制系统实时调节；有20L到10000L各种型号可选。

This equipment is used in the manufacture of lithium battery positive material precursors. The unique mixer form and kettle structure can achieve an ideal liquid flow state, optimize the crystal nucleus state, and form a precursor reaction with good sphericity, uniform distribution and stable state. This equipment can monitor the pH and temperature online, and adjust it in real time through the PLC control system. The equipment is available in various models from 20L to 10000L.



客户服务

CUSTOMER SERVICE

鹏翼智能凭借自身 20 余年丰富的经验、技术积累与沉淀为国内外众多客户提供全程专业化的技术支持、产品研磨方案设计、物料研磨实验和量身定做的解决方案。

Pengyi Intelligent, with over 20 years of rich experience, technology accumulation and precipitation, provides customer sat home and abroad with professional technical support, product grinding scheme, materiagrinding experiments and tailor - made solutions.

售前

pre-sales

鹏翼智能提供包括需求分析、技术交流引导和项目方案设计，为每一位客户提供物料实验服务，只为提供更专业优质的服务。

Pengyi Intelligent provides demand analysis, technical advise and project solution, as well as material experiment services, aim to provide all customers with more professional and high-quality services.

售中

In sale

鹏翼智能始创于 1995 年，近 30 年专注于物料研磨、搅拌、分散的技术研发与应用，致力于为客户服务。公司拥有秦皇岛及广州两大生产基地，关键设备自主生产，品质可控。

Pengyi Intelligent, founded in 1995, has focused on the research and development of material grinding, mixing and dispersing technologies in the past 30 years. The company has two production bases in Qinhuangdao and Guangzhou, all the key equipment is produced independently and the quality is controllable.

售后

After sale

公司以企业网站、公司商务平台、售后服务热线等信息平台，不断提升自身的售后服务效率，始终坚持“优质、快捷、诚信”的服务理念，结合企业在设备生产制造领域的综合优势，竭诚为广大客户服务，始终坚持“12 小时内提供解决方案，24 小时内上门分析解决问题”的承诺我们将秉承和发扬公司的服务理念，不断提升公司产品的全称跟踪式售后服务。

The company continuously improves its after-sales service through enterprise websites, business

platforms, and after-sales service hotline. It always adheres to the service concept of "high quality, prompt response, and integrity", and combines the advantages of equipment production to serve all customers wholeheartedly. "providing solutions within 12 hours, analyze and solve problems withi24 hours , we will promote the company's service philosophy, continuously improving the full process tracking of after-sales service.



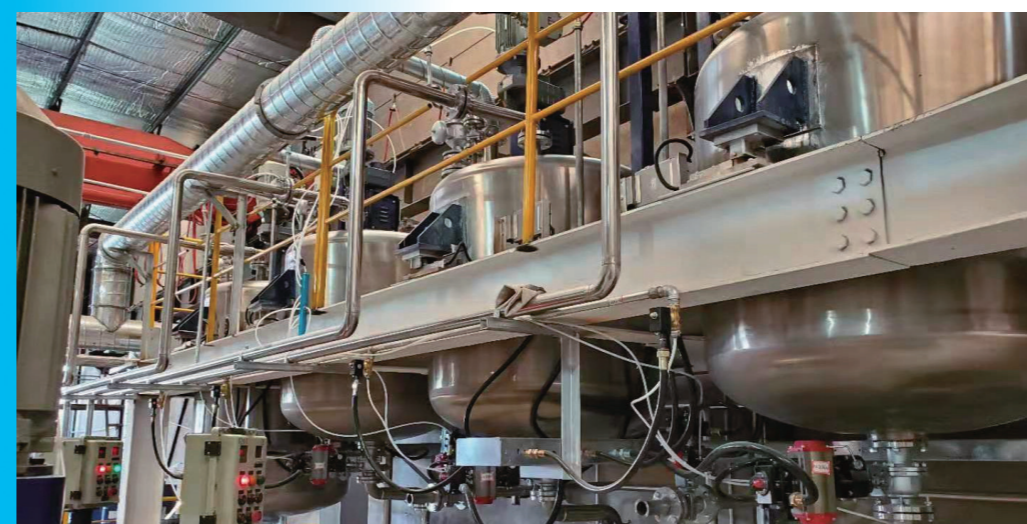
合作共赢

WIN-WIN COOPERATION

相关案例 Relevant case



相关案例 Relevant case



合作共赢

WIN-WIN COOPERATION

服务全球 3500+ 家企业及机构

The grid displays the following logos from top-left to bottom-right:

- 兰州大学 LANZHOU UNIVERSITY
- 晨虹漆 Chenhong
- sciencence
- 新宇
- 美中美 MERRYMATE
- CEIC 中国电科
- BBMG
- 金龙汽车 KING LONG
- CEIC 中国电科
- 东方雨虹 ORIENTAL YUHONG
- 青竹画材 CHINJOO 健康画材
- 中国矿业大学(北京) CHINA UNIVERSITY OF MINING AND TECHNOLOGY-BEIJING
- 福聚 FUXI
- 中科海钠 HiNa BATTERY
- JOTUN Jotun Coatings
- BOVLIN
- 青岛科技大学 Qingdao University of Science & Technology
- 康达新材 Kangda New Materials
- 瑞朗达 Ralead 光伏行业专用
- YATU
- ADAYO 华阳集团
- 华豹
- 南京大学 NANJING UNIVERSITY
- ELION 亿利